

JOINT IMPLEMENTATION: DESIGNING THE JI OF THE FUTURE

JISC stakeholder question and answer session

Bonn, May, 2012



JOINT IMPLEMENTATION

Encourages and rewards
emission reduction initiatives in
industrialized countries

Projects in any country with a
commitment under Kyoto Protocol

Jl projects produce
emission reduction units (**ERUs**)

Track 1 and Track 2



PROJECT SUBMISSIONS CONTINUE

Track 1	
324	Projects registered in 13 countries
Track 2	
320	Project design documents <u>published</u>
1	Programme of activities <u>published</u>
41	Determinations <u>deemed final</u> (registered)
	~ 11 Million Tonnes of CO ₂ e per year
62	Verifications <u>deemed final</u>
	~ 15 Million Tonnes of CO ₂ e.

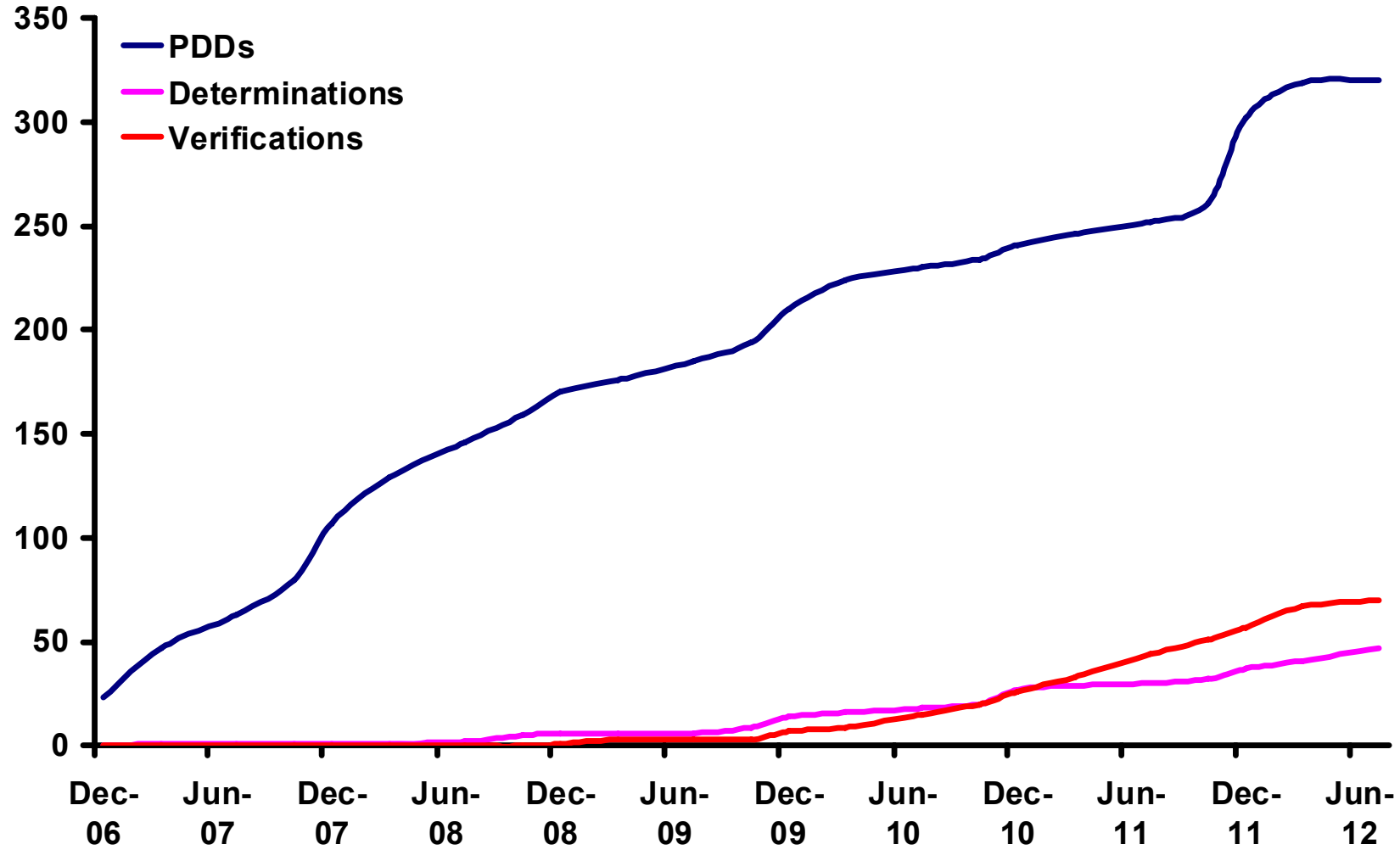


ERUs ISSUED

	Track 1	Track 2	Total
2008	120,000	-	120,000
2009	4,670,641	1,324,448	5,995,089
2010	28,033,010	2,921,570	30,954,580
2011	86,702,918	6,818,250	93,521,168
2012	44,384,212	3,329,297	47,713,509
Total	163,910,781	14,393,565	178,304,346

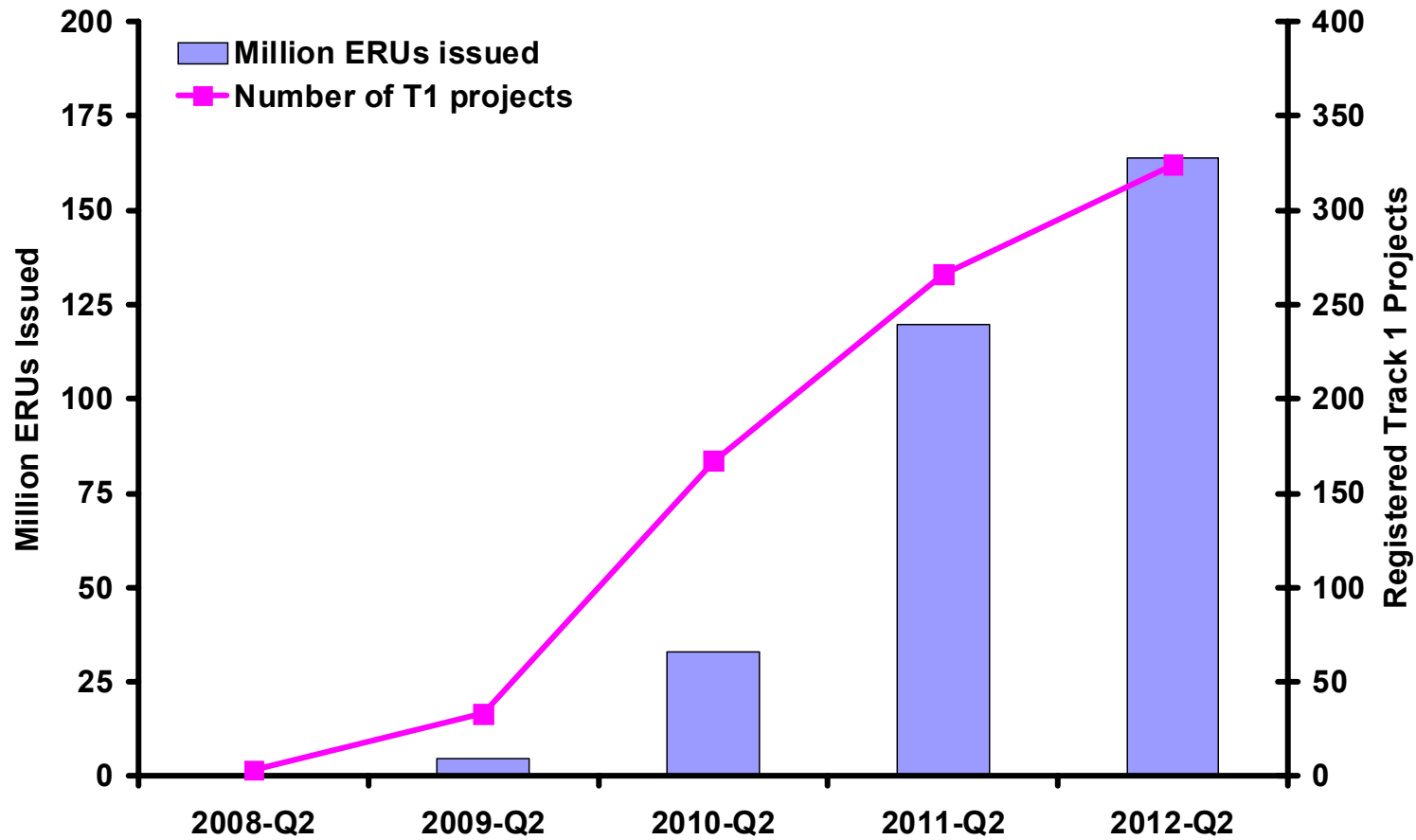


Project Submissions – Track 2



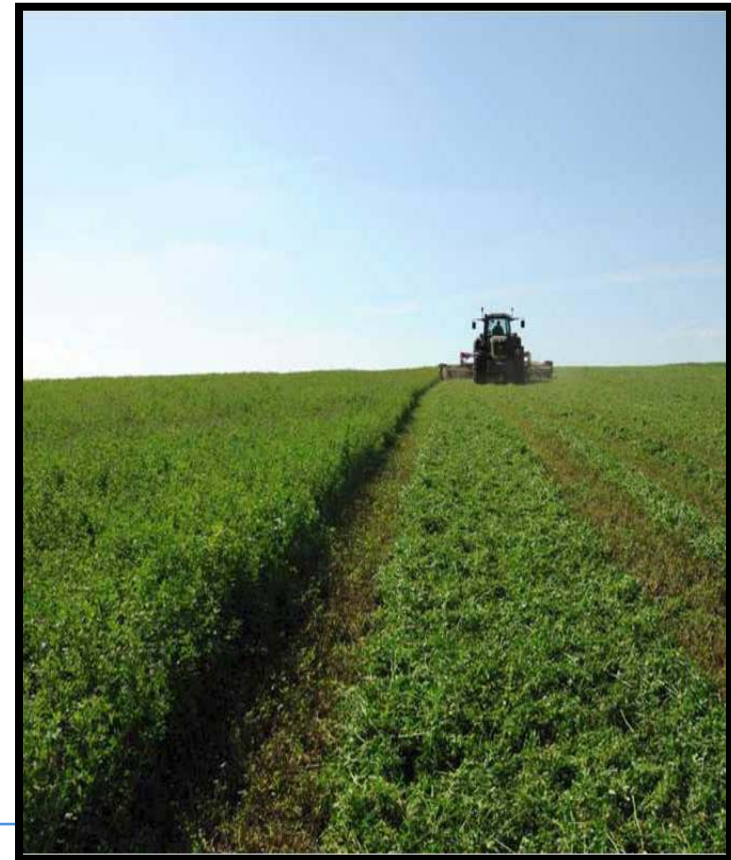
JOINT IMPLEMENTATION

TRACK 1 PROJECTS



FEE STRUCTURE REVISION

- **2011: Introduced Fees for Track 1, resulting in sustainable fee levels.**
- **2012: Adjusting fee structure to allow project participants to use Track 1 fees already paid towards Track 2 dues and vice versa in case of projects moving tracks.**



MANAGEMENT ACTION PLAN

- Greater efficiency in the continued operation of the JI
- Enhanced promotion of the mechanism
- Effective contribution to the future development of JI



JI GUIDELINE REVIEW

In Durban, the Parties asked the JISC to draft a revised set of key attributes and transitional measures for a change in the JI Guidelines.

Based on CMP mandate, JISC recommendations from 2011, and inputs from Parties and stakeholders, the JISC is preparing a revised set of guidelines for consideration at CMP 8 in Qatar.



JOINT IMPLEMENTATION

JI GUIDELINES REVIEW

- Maintain open definition of JI activities
- Elaboration of project cycle
 - a) Registration
 - b) Issuance
- Governance
 - a) Changing the international oversight to focus more on process and compliance among host Parties and accredited entities
 - b) Ensure high standards for all activities under new JI mechanism
- Accreditation
 - a) Alignment with CDM and possibly other accreditation and standard bodies
 - b) Strengthen and clarify project and accreditation requirements



2012 AND BEYOND

- In Durban, the Parties established second commitment period for Kyoto Protocol.
- Starts 1 January 2013 and ends on 31 December 2017 or 31 December 2020.
- Future Outlook
 - a) Transition to future model
 - b) JI interaction with markets
 - c) Stakeholder involvement



For further information:

<http://ji.unfccc.int>

Thank you.

Any questions?

Wolfgang Seidel, chair
Joint Implementation Supervisory Committee

